

HMIC Summary Value for Money Profile 2014



Metropolitan Police Service

compared with:

West Yorkshire, Greater Manchester, West Midlands and Metropolitan Police.

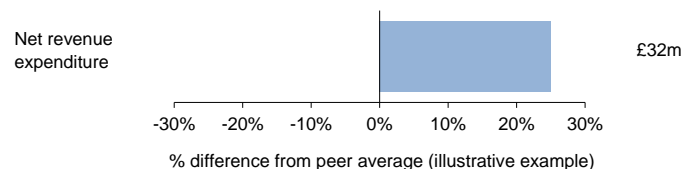
Comparisons are one of the most powerful ways of making data about the police service transparent. They expose important differences between forces and enable those without specialist knowledge of policing to find answers to questions and understand how the service provides value for public money.

HMIC's Value for Money (VfM) profiles provide comparative data on a wide range of policing activities. Rather than showing all of the details, this summary profile is designed to show you how this force differs from other similar forces. Does it spend more or less than the average? How differently does it invest its resources? Does it face greater or fewer demands? How does the crime rate differ from those in comparable force areas?

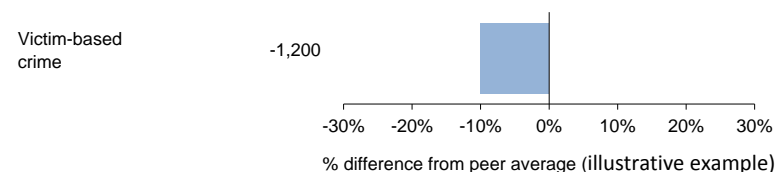
From these starting points, the full profiles allow you to investigate further those differences identified by this summary and we encourage readers to probe further in areas of data where the information prompts particular questions. However, the full profiles also raise additional questions. Why are some forces spending over four times more per head of population on criminal justice than others? Why does one force have a noticeably greater number of officers working in administrative support, compared to similar forces?

How to use this summary

Bar charts show the percentage difference between your force's income, expenditure, demand etc. (known as the value), and the average for those forces which are most similar to it (known as its peers). The figures to the left or right of the bars are not the values themselves; rather they show the net 'cost' or impact of the variation. For example, they show the number of additional 999 calls a 10% difference to the average rate makes or how many fewer recorded crimes visible officers are dealing with in the force. Two illustrative examples (for a 'dummy' force) are shown below:



This force's net revenue expenditure per head of population is 25% above the average of its peers. This difference equates to a cost of £32m compared to if the force was spending the average of its peers.



This force's level of recorded victim-based crime is 10% lower than the average of its peers. This equates to 1,200 fewer victim-based crimes compared to if the force had the average recorded crime rate of its peers.

In all cases, details of the data used and relevant caveats can be found in the full profiles and the accompanying *Overview of the Summary's Calculations* document (both of which are available from HMIC's website, <http://www.justiceinspectors.gov.uk/hmic/>).

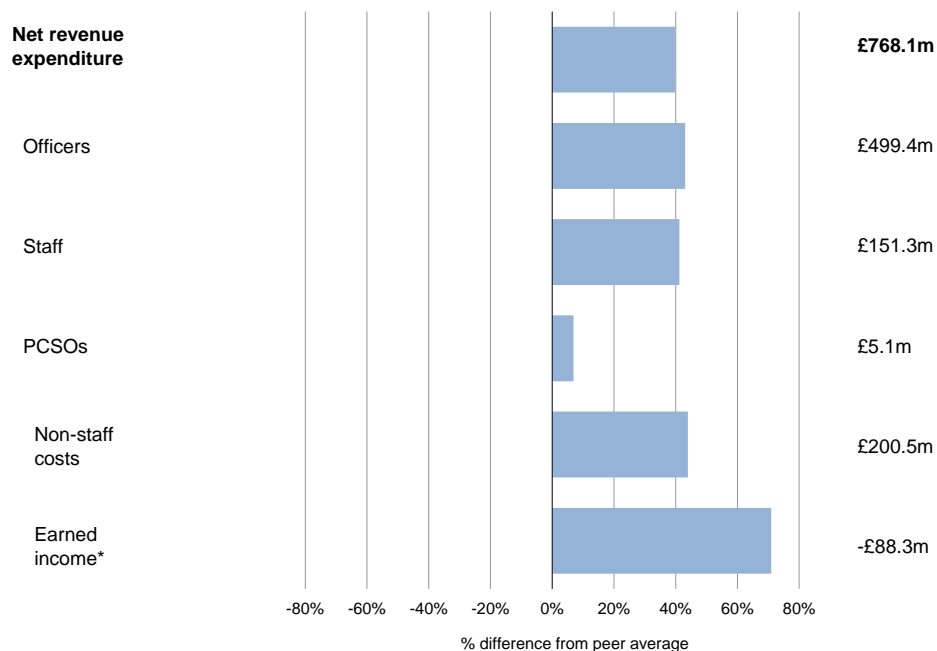
On the final page of this summary, we provide a list of all of the categories from the full VfM profile in which the force's spend is an outlier. The force's figures are compared to the spend of other forces. To be flagged as an outlier, the spend must be one of the highest 10 percent or lowest 10 percent of any force, and the effect of the difference must be at least £1 per head of population.

Income and expenditure in Metropolitan Police

Force's estimated expenditure and income in 2014/15

1. How does the force's income and expenditure compare with peers?

The chart below shows how the force's income and expenditure per head of population compares with the average of its peer group of forces:

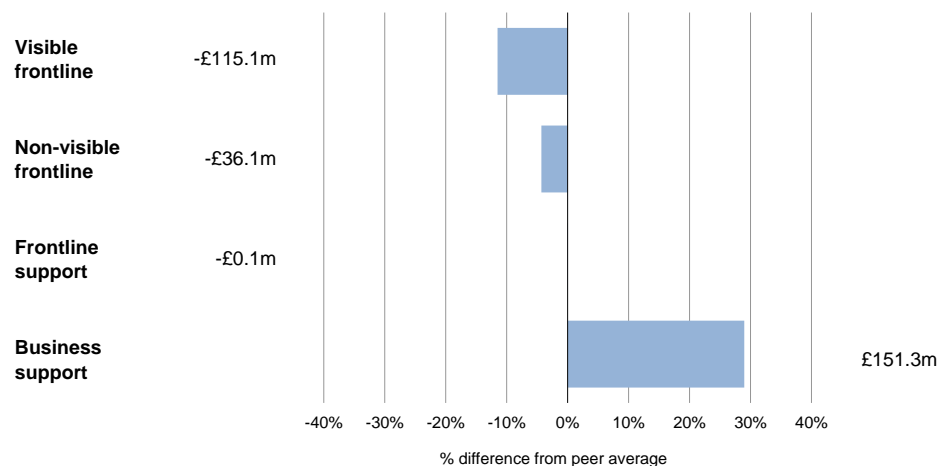


For more information on the data used here, please see 'Income & Expenditure - Overview'.

* When considered next to areas of expenditure, below average income can be considered as a net cost to the force compared to other forces. Similarly, above average income can be considered as a net saving to the force compared to elsewhere.

2. Where is the force spending money compared with peers?

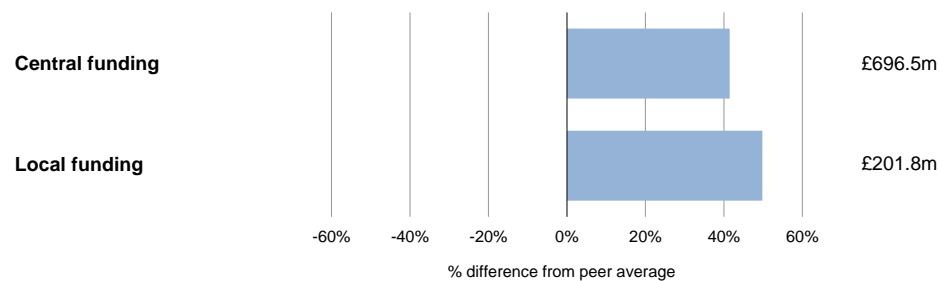
The chart below shows how the proportion of the force's spend across frontline, frontline support and business support functions compares with the average of its peer group of forces:



For more information on the data used here, please see 'Income & Expenditure - Spend by function'.

3. How is the local policing body funded compared with peers?

The chart below shows how the local policing body's funding per head of population compares with the average of its peer group of forces:



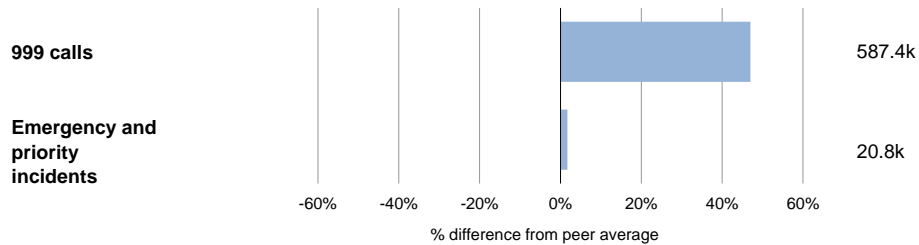
For more information on the data used here, please see 'Income and expenditure - Financing'.

Demand in Metropolitan Police

Demands on the force in 2013/14

4. Is the force experiencing higher demand than peers?

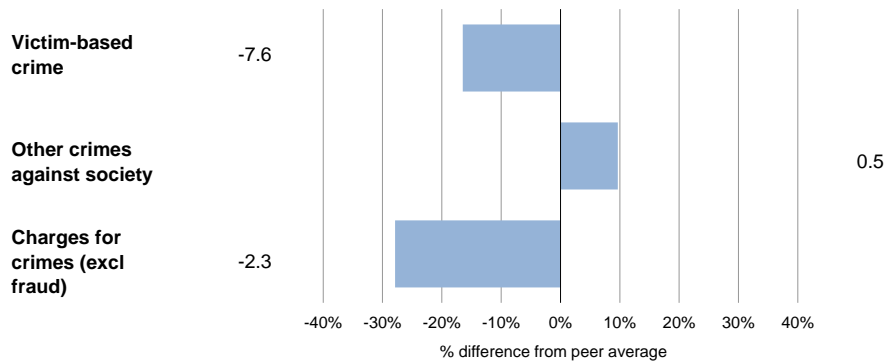
The chart below shows how the number of 999 calls received and emergency and priority incidents recorded by the force per head of population compares with its peer group of forces:



For more information on the data used here, please see 'Demand 999 calls/Emergency & Priority incidents'. Note that these categories do not cover all of the demands on the force.

5. Are the force's police officers dealing with more crimes compared with peers?

The chart below shows how the number of recorded crimes and charges per visible officer in the force compares with the average of its peer group of forces:



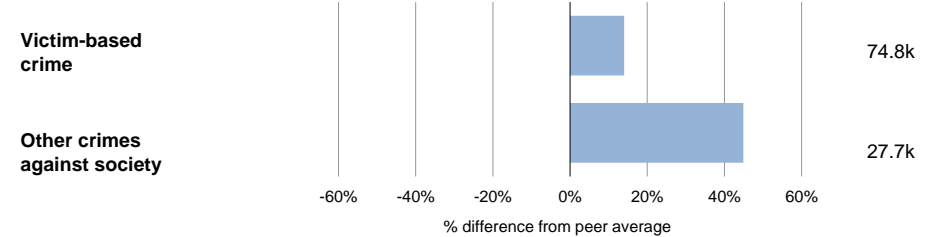
For more information on the data used here, please see 'Demand - Recorded crimes per visible officers/Former detections'.

Crime in Metropolitan Police

Crimes and outcomes recorded in the force in 2013/14

6. How does the level of recorded crime in the force compare with peers?

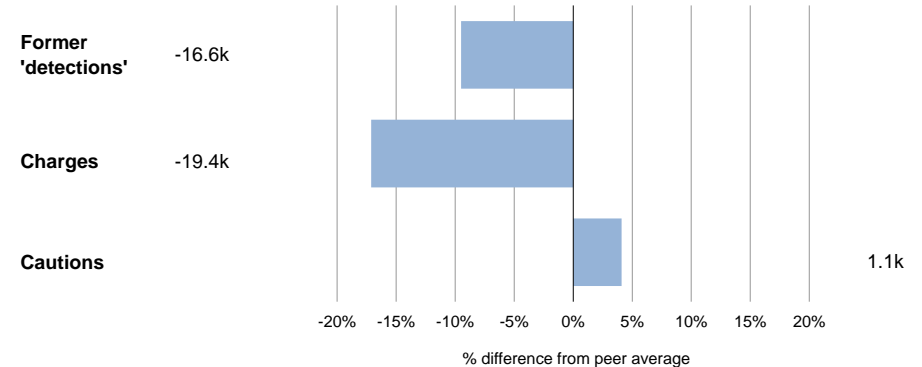
The chart below shows how the number of recorded crimes per head of population in the force compares with the average of its peer group of forces:



For more information on the data used here (including a break down by crime type), please 'Offences and Outcomes'.

7. How do the investigative outcomes in the force compare with peers?

The chart below compares formal investigative outcomes per crime for crimes (excl fraud) in the force with the average of its peer group of forces, taking into account differences in the mix of crime between forces. Please note that use of community resolutions by some forces will affect the comparability of former 'detection rates':



For more information on the data used here, please see 'Offences and Outcomes'.

Outliers

This page provides the areas in which the force is an outlier in costs. The force's figures are compared to the spend of other forces. To be flagged as an outlier, the spend must be one of the highest 10% or lowest 10% of any force and the effect of the difference is greater than £1 per head of population. The difference (Diff) calculations are the net cost of the difference in spend to the average per head of all forces.

OVERALL COSTS

	£m	£/head	Avg	Diff £m
Police officers	1,658.8	197.3	100.2	816.6
Police staff	518.5	61.7	39.1	189.9
Workforce	2,256.9	268.4	146.4	1,025.8
Non-staff costs	656.8	78.1	44.5	282.6
Earned income	-212.7	-25.3	-8.0	-145.4
Net revenue exp.	2,700.9	321.2	182.9	1,162.9
National policing	281.0	33.4	4.7	241.4
Total inc nat. pol.	2,982.0	354.6	187.6	1,404.3

Officer costs

All pay exc. overtime	1,595.9	189.8	97.2	778.7
Overtime	62.9	7.5	3.0	37.9
Total	1,658.8	197.3	100.2	816.6

Overtime

	OT % sal	Avg	Diff £m
Officer overtime as a % salary	3.8	3.0	13.2

Staffing

	FTE (POA)	FTE/1000	Avg	Diff £m
Police officers	28,382.7	3.4	1.9	691.5

Pay

	£000/FTE	Avg	Diff £m
Police officers	56.2	50.7	155.6
Police staff	47.4	33.0	158.0
PCSOs	37.3	30.5	14.6

Non Staff Costs

	£m	% staff cost	Avg	Diff £m
Premises related expenses	169.7	7.5	5.1	55.4
Force collaboration payments	0.0	0.0	3.5	-78.1
Restructure, training and conference	0.0	0.0	0.6	-12.4

Earned Income

	£m	£/head	Avg	Diff £m
--	----	--------	-----	---------

	£m	£/head	Avg	Diff £m
Sales, fees, charges and rents	-149.6	-17.8	-2.6	-127.7
Special police services	-35.1	-4.2	-0.9	-27.5
Total earned income	-212.7	-25.3	-8.0	-145.4

COSTS BY OBJECTIVE

	£m	£/head	Avg	Diff £m
--	----	--------	-----	---------

NRE by objective group				
Local policing	980.4	116.6	72.0	374.8
Dealing with the public	135.3	16.1	11.1	42.0
Criminal justice arrangements	150.4	17.9	11.9	50.3
Operational support	110.7	13.2	7.4	48.5
Intelligence	114.0	13.6	7.5	50.6
Investigations	270.6	32.2	15.7	138.2
Investigative support	68.5	8.1	4.7	28.6
Support functions	704.2	83.7	37.3	390.9

Local policing

Incident (response) management	397.8	47.3	28.7	156.9
Local investigation/prisoner processing	202.5	24.1	13.2	91.6
Local policing	980.4	116.6	72.0	374.8
Total exc local investigation	778.0	92.5	58.8	283.2

Dealing with the public

Central communications unit	125.8	15.0	9.3	48.0
Dealing with the public	135.3	16.1	11.1	42.0

Criminal justice

Custody	68.8	8.2	5.1	25.7
Custody subtotal	75.6	9.0	6.4	22.1
Criminal justice	47.3	5.6	3.0	22.1
Police national computer	18.8	2.2	1.2	8.9
Criminal justice arrangements	150.4	17.9	11.9	50.3

Operational support

Advanced public order	37.7	4.5	1.2	27.4
-----------------------	------	-----	-----	------

	£m	£/head	Avg	Diff £m		£m	£/head	Avg	Diff £m
Mounted police	10.4	1.2	0.1	9.3	Human resources	33.8	4.0	2.2	15.5
Operational support	110.7	13.2	7.4	48.5	Professional standards	28.2	3.4	1.3	17.3
Intelligence					All other support functions	58.5	7.0	4.0	24.8
Intelligence gathering	51.1	6.1	3.6	20.9	Support functions	704.2	83.7	37.3	390.9
Intelligence analysis / threat assessment:	62.7	7.5	3.7	32.0	National policing				
Intelligence	114.0	13.6	7.5	50.6	Counter terrorism/special branch	148.7	17.7	3.6	118.6
Investigations					Other national policing requirements	132.9	15.8	0.9	125.2
Public protection	139.0	16.5	7.6	75.3	National policing	281.0	33.4	4.7	241.4
Major investigations unit	67.9	8.1	3.5	38.6	Specific grants	-321.4	-38.2	-4.0	-287.4
Serious and organised crime unit	45.6	5.4	2.6	24.0	Cost net of grants	-40.4	-4.8	0.7	-46.0
Investigations	270.6	32.2	15.7	138.2	Police and Crime Commissioner				
Investigative support					Cost of PCC/Deputy Mayor for Policing :	30.8	3.7	0.3	28.7
Scenes of crime officers	22.2	2.6	1.5	9.7	PCC/local policing body commissioned :	-1.6	-0.2	2.2	-19.8
Other forensic services	20.0	2.4	0.9	12.8					
Investigative support	68.5	8.1	4.7	28.6					
Support functions									
Estates / central building	197.0	23.4	8.6	124.3					
ICT	195.3	23.2	8.7	122.4					
Training	45.2	5.4	3.4	16.8					
Fleet services	47.7	5.7	3.6	17.3					
Administration support	59.2	7.0	2.3	40.2					